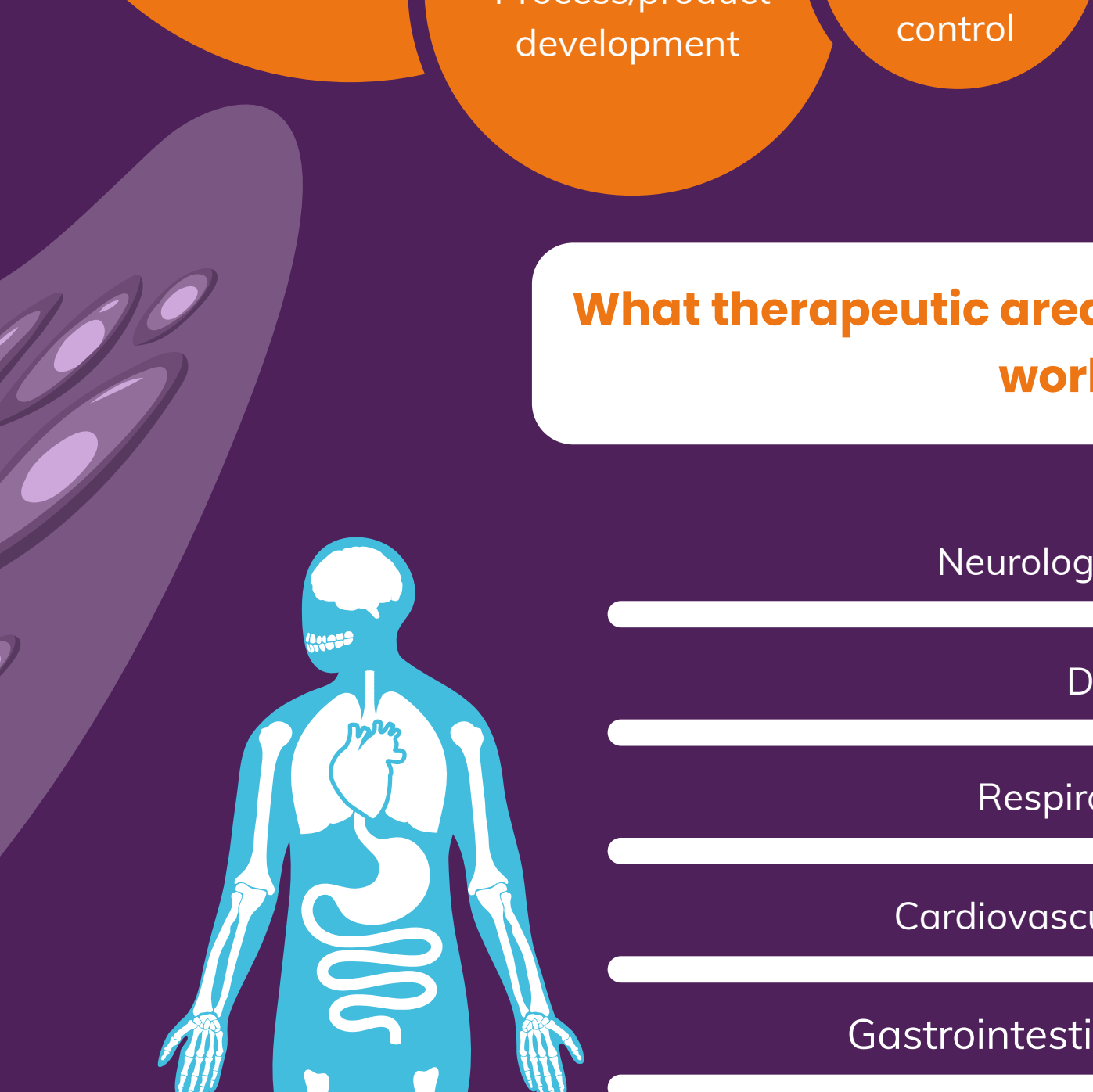


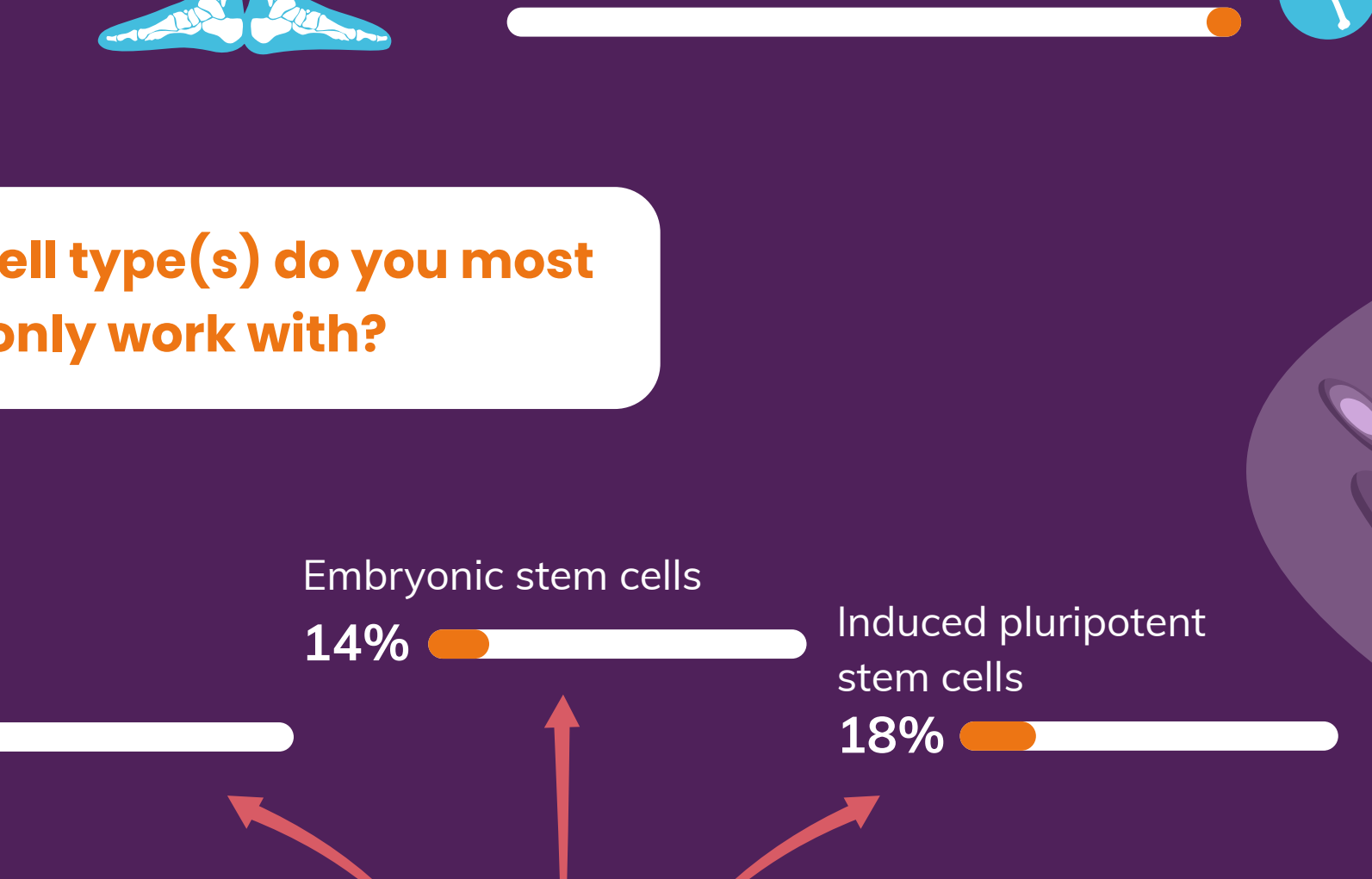
Key trends in engineering tissues for regenerative medicine

For our Spotlight on tissue engineering, we surveyed our audience to find out the latest trends, opinions.

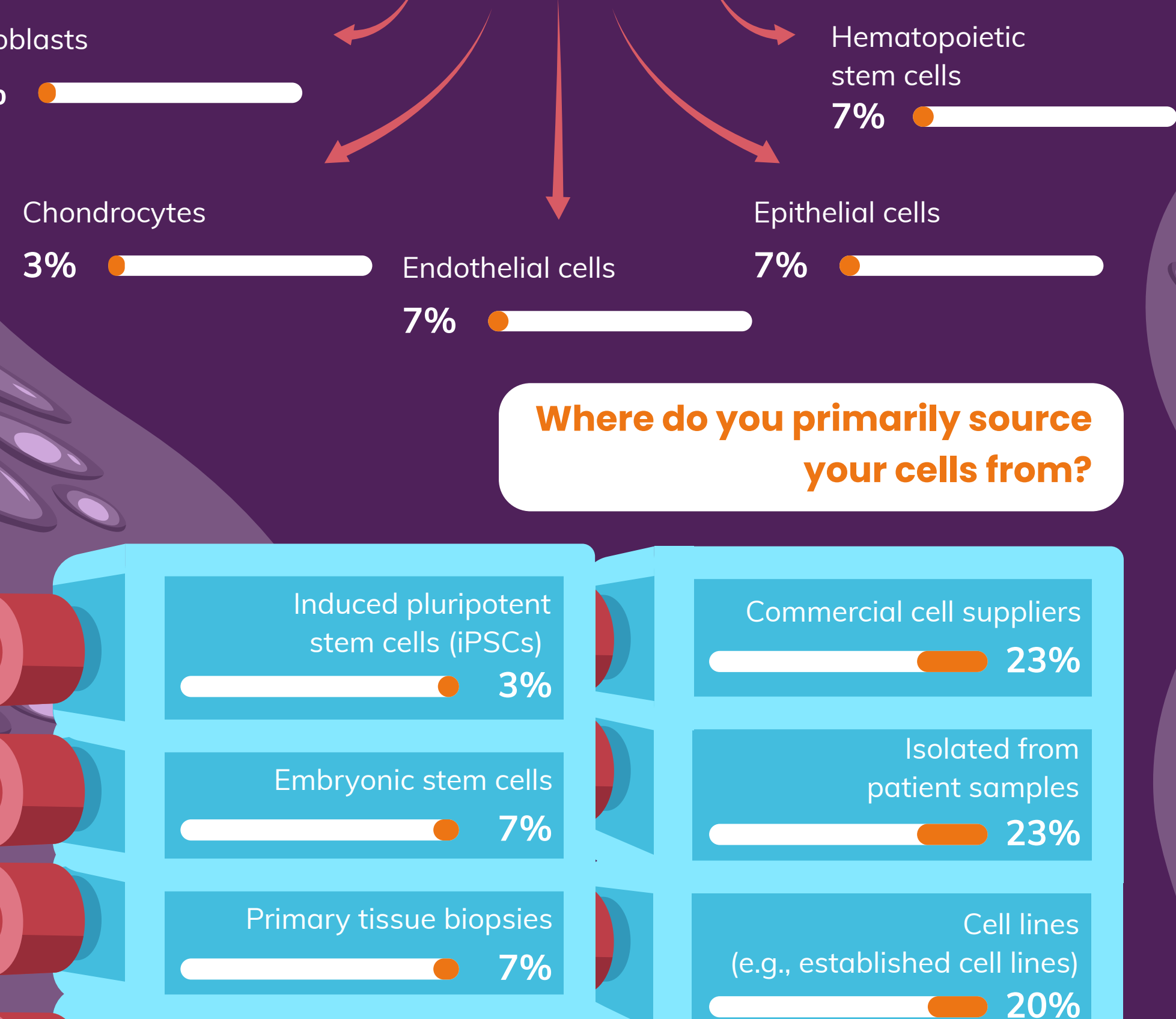
What is the focus of your work?



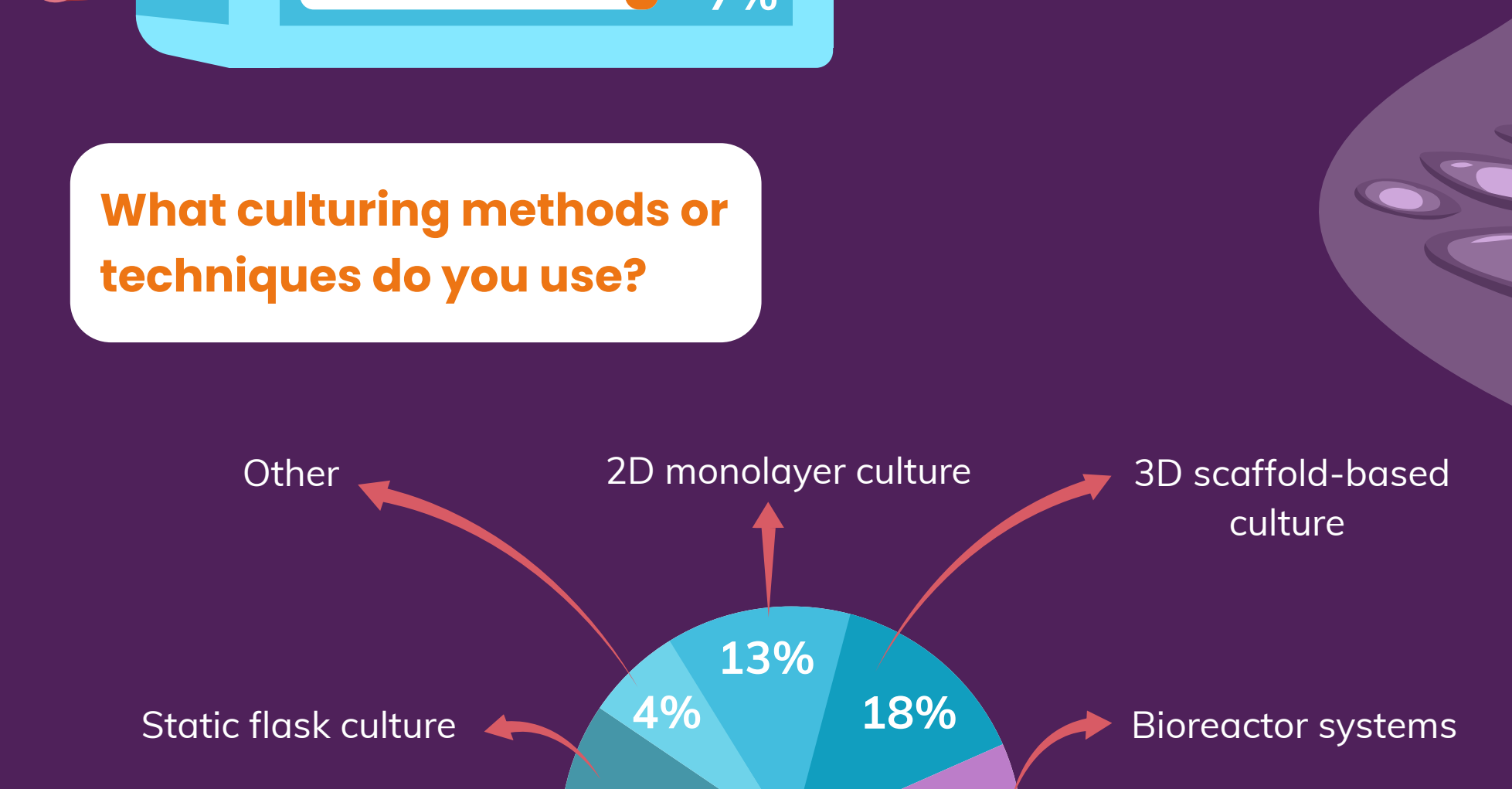
What therapeutic area(s) do you work in, if any?



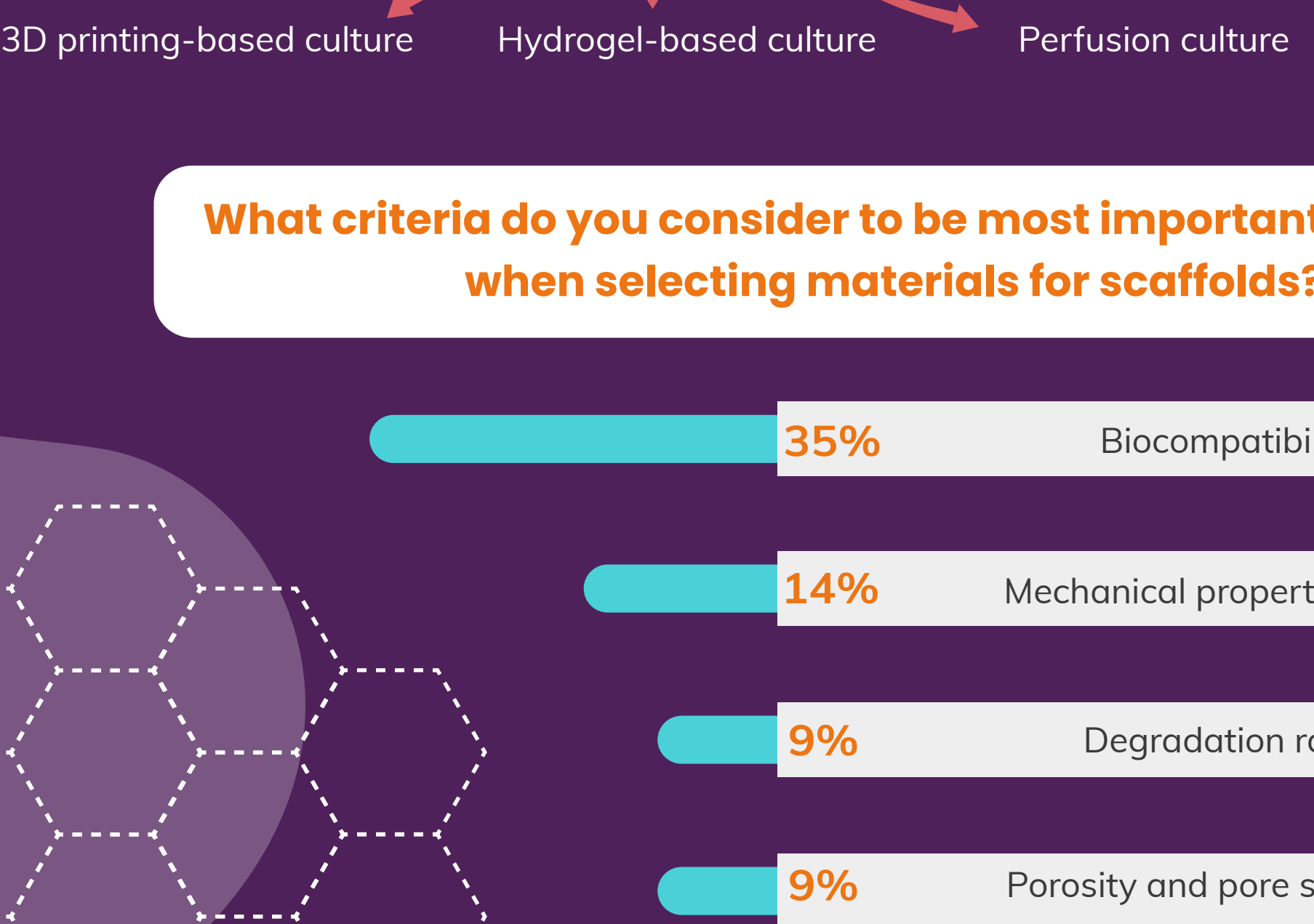
What cell type(s) do you most commonly work with?



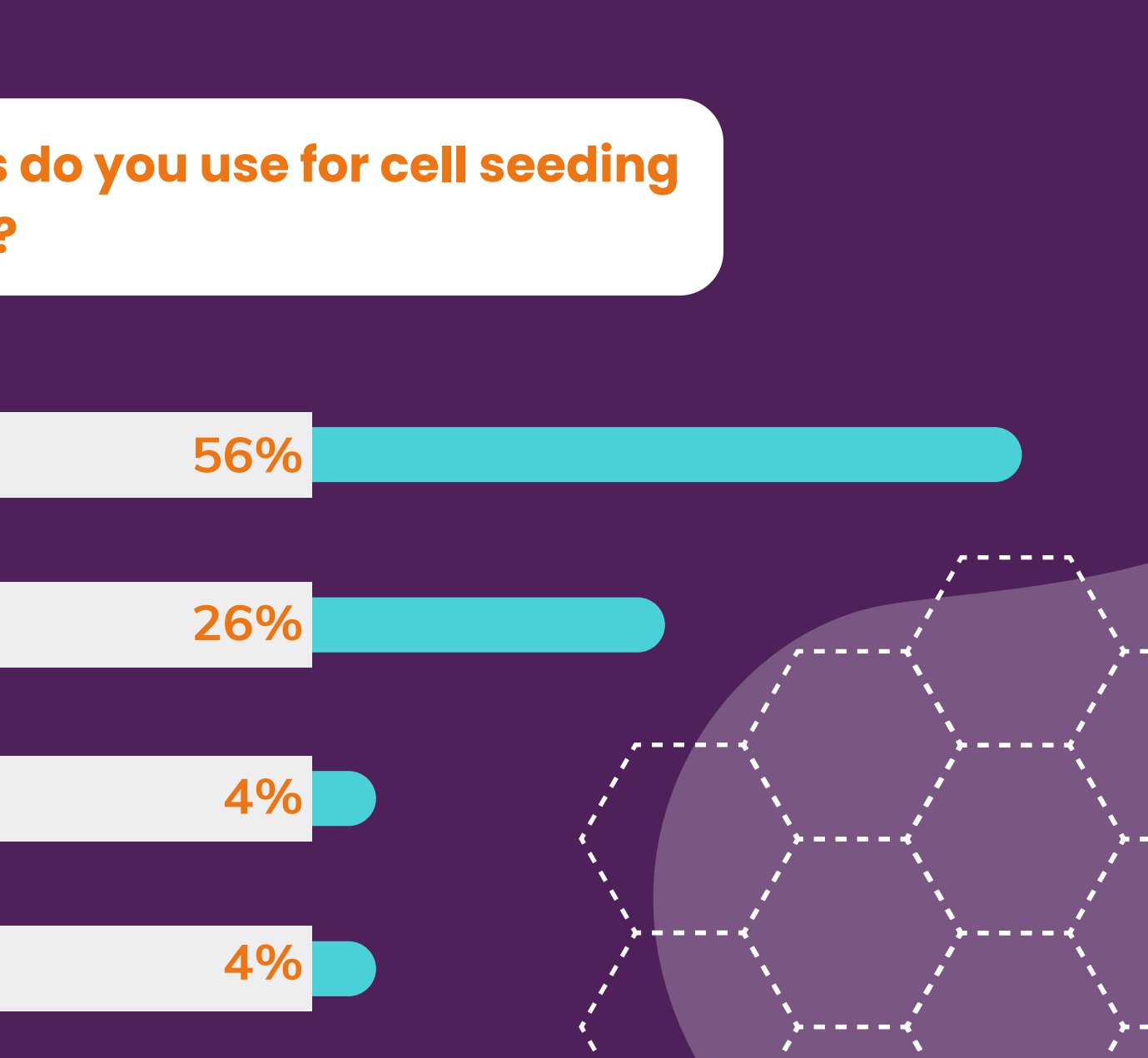
Where do you primarily source your cells from?



What culturing methods or techniques do you use?



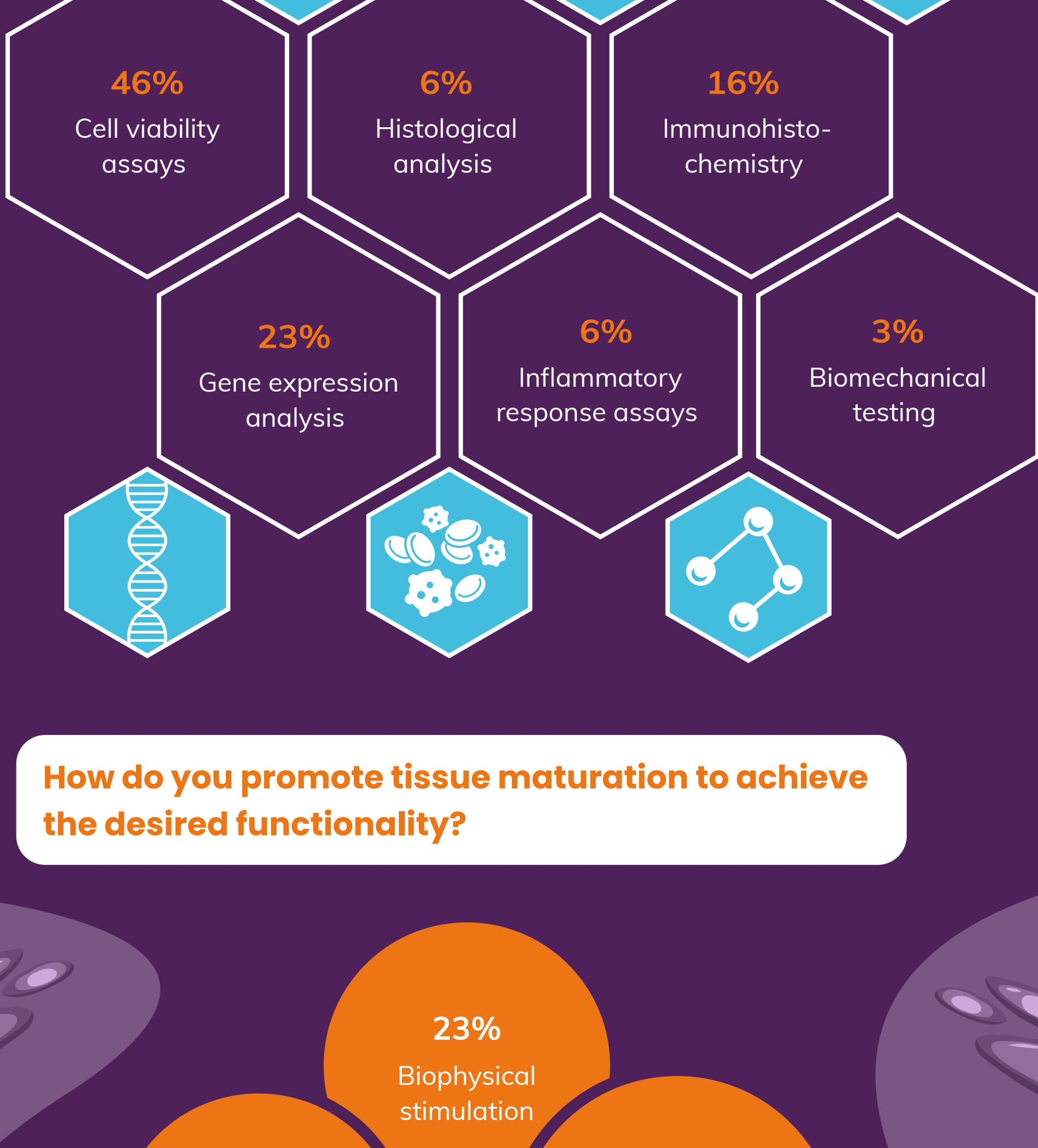
What criteria do you consider to be most important when selecting materials for scaffolds?



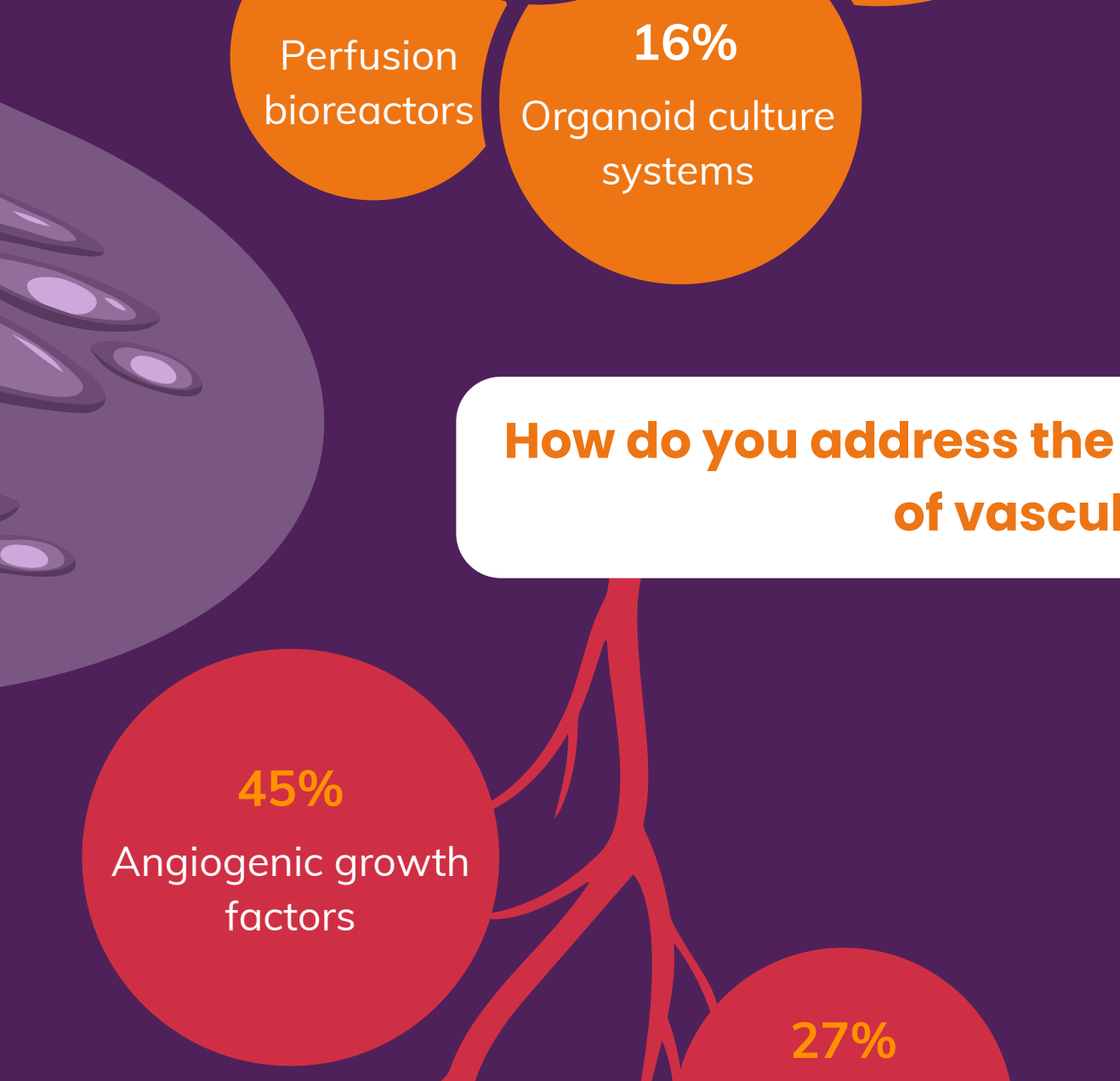
What methods do you use for cell seeding onto scaffolds?



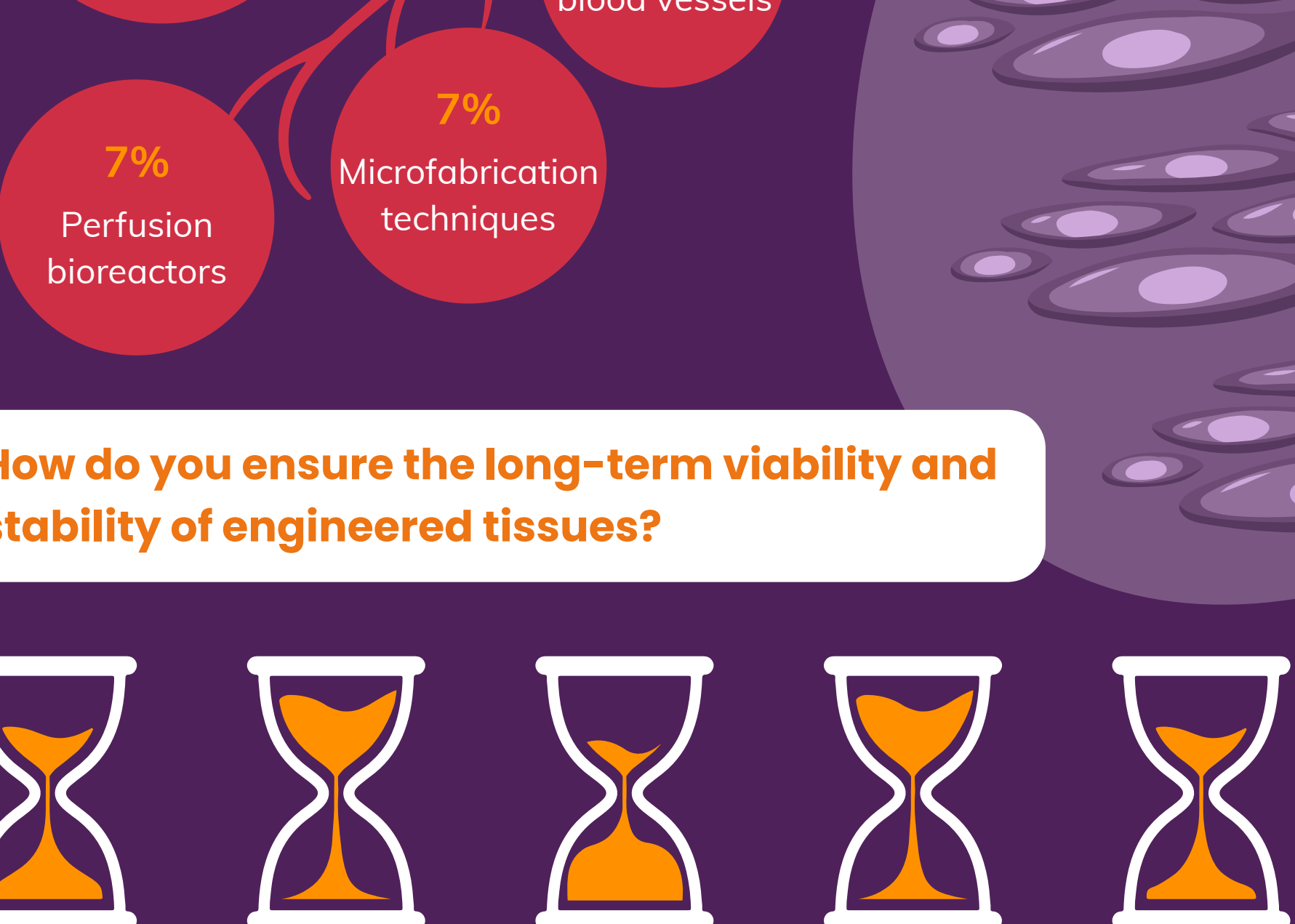
What methods do you use to assess the biocompatibility of engineered tissues?



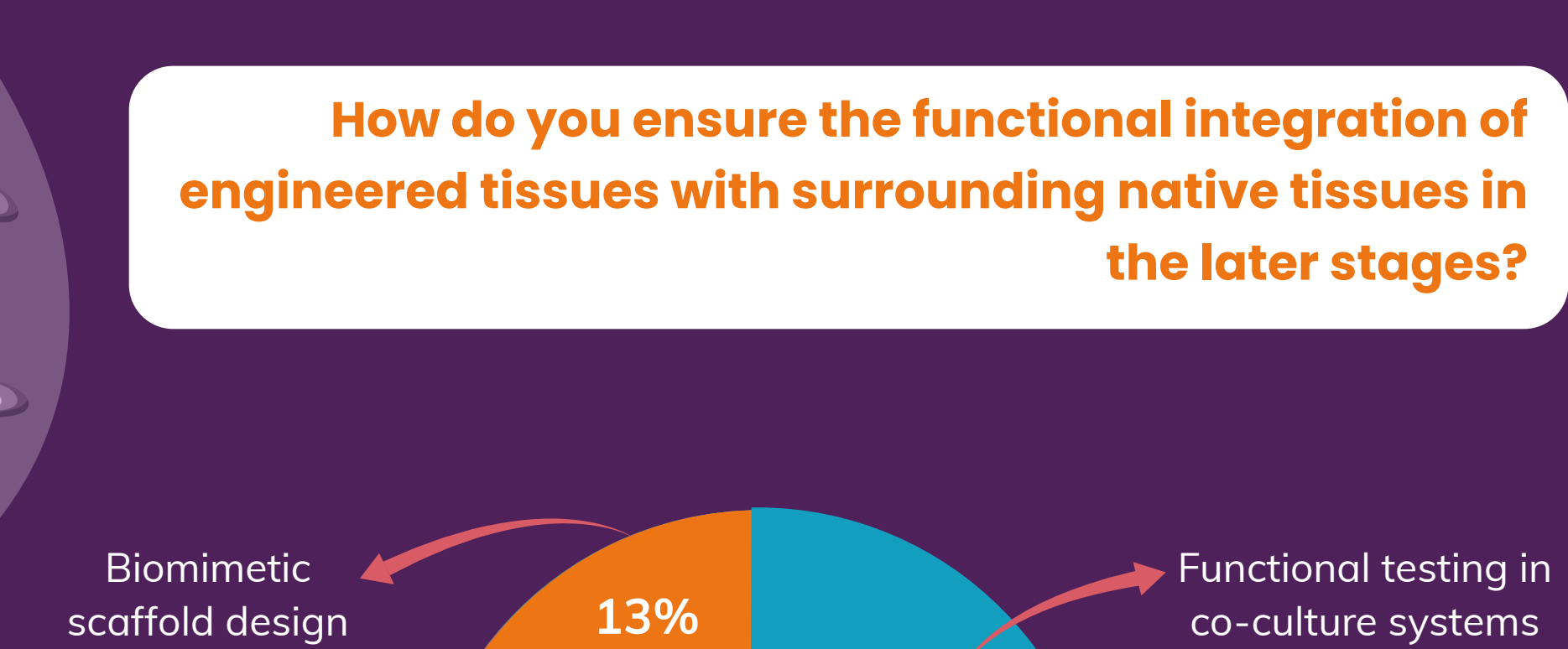
How do you promote tissue maturation to achieve the desired functionality?



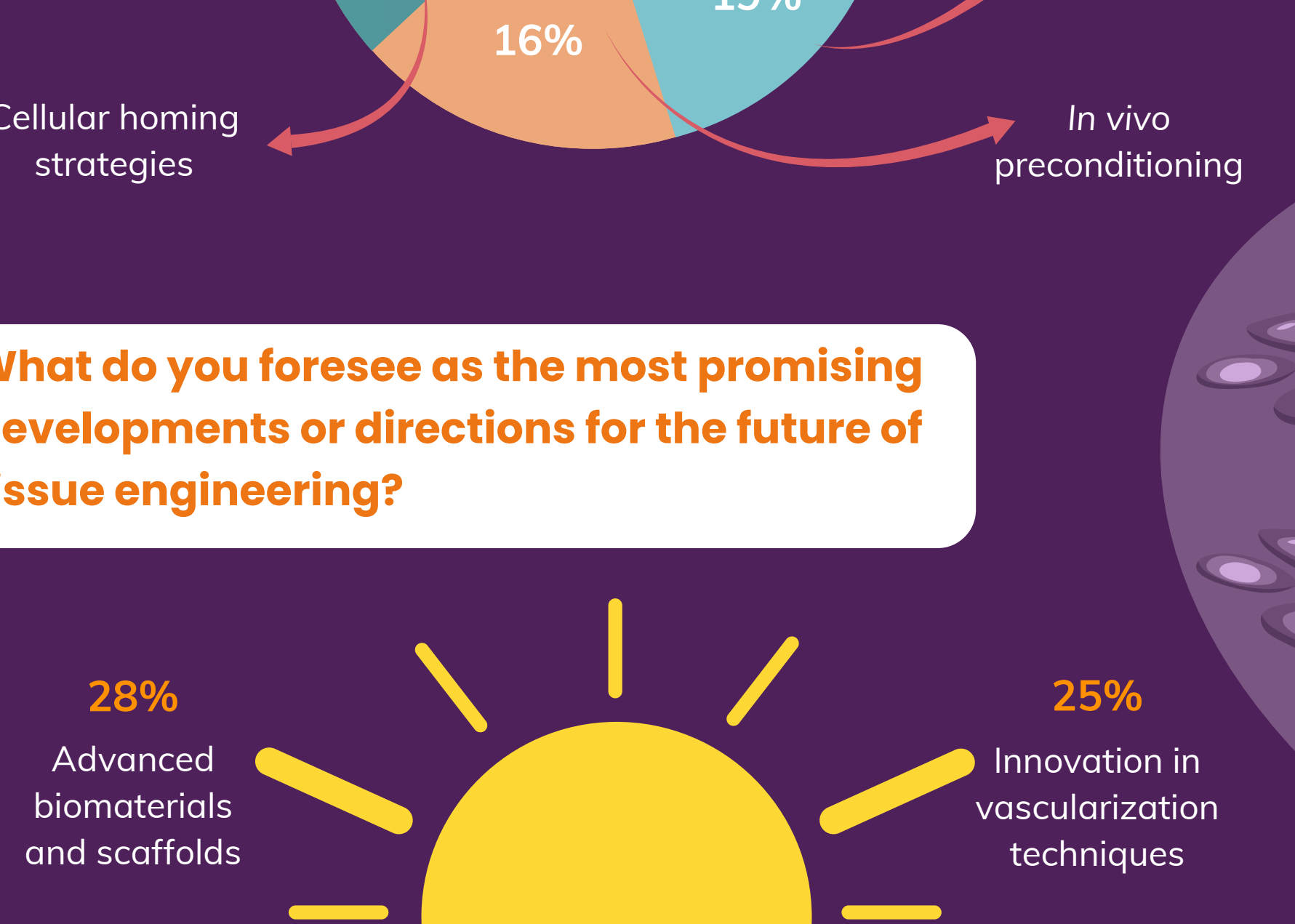
How do you address the challenge of vascularization?



How do you ensure the long-term viability and stability of engineered tissues?



How do you ensure the functional integration of engineered tissues with surrounding native tissues in the later stages?



What do you foresee as the most promising developments or directions for the future of tissue engineering?



ABOUT THE RESPONDENTS

Location



Sector

